

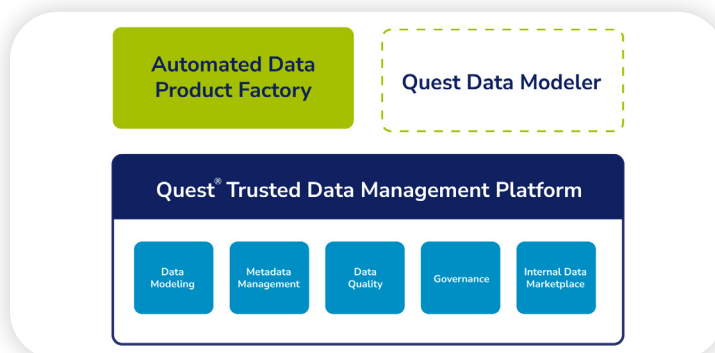
DATA SHEET

Quest® Data Modeler

From data models to data meaning
Fast | Aligned | Trusted

Quest Data Modeler is the cloud-native, SaaS modeling tool purpose-built for how data teams actually work today. It combines AI-assisted modeling, real-time collaboration and enterprise-grade governance in a browser-based environment that delivers governed definitions, naming standards and conceptual-to-physical design layers that every downstream tool, semantic layer, and AI system in your organization can depend on.

Backed by 30+ years of modeling heritage and natively integrated into the Quest Trusted Data Management Platform, Quest Data Modeler meets organizations wherever they are on their modeling journey to fit into whatever model they choose: desktop, fully cloud-native, or a hybrid combination of both depending on who will be using Quest's data modeling tools.



Stop modeling tables. Start modeling meaning.

Benefits

- **Accelerated delivery:** Reduce modeling times from weeks to hours so your teams can move from idea to implementation without the modeling process becoming a bottleneck.
- **Improved model quality before production:** Give your teams a governed, reviewable environment to collaborate, compare changes, resolve conflict and prevent costly design issues earlier in the lifecycle.
- **Modernize without disrupting existing investments:** Connect established erwin Data Modeler practices via Mart on Cloud to adopt the modern SaaS experience at your own pace without abandoning your existing models, workflows, and expertise.
- **Increase productivity across modern data teams:** Support the platforms and workflows your teams already use so data engineers, architects, analysts, and other stakeholders can work more efficiently across the entire data lifecycle.
- **Stronger foundation for trusted data products:** turn data models into governed, reusable assets that improve data quality and consistency.

Sound familiar?

Modern data teams are working within two realities. The business demands trusted, AI-ready data at speed and scale like never before and there is a persistent gap between the speed the organization needs and the consistency and standardization that solid data foundations require.

- **Speed and delivery** — legacy data enterprise modeling practices cannot move as fast as agile, AI-assisted cloud-based modelers. Slow modeling cycles delay insights and stall business momentum.
- **Collaboration & alignment** — Traditionally, modeling has been gate-kept from the people who consume its output. The gap between business intent and technical implementation widens with every initiative.
- **Governance & semantic drift** — Inconsistent definitions of 'customer' or 'revenue' or 'churn' produce inconsistent meanings that can cause drift that erodes trust across every dashboard, report and AI system.



AI cannot fix bad data built on poor modeling foundations.

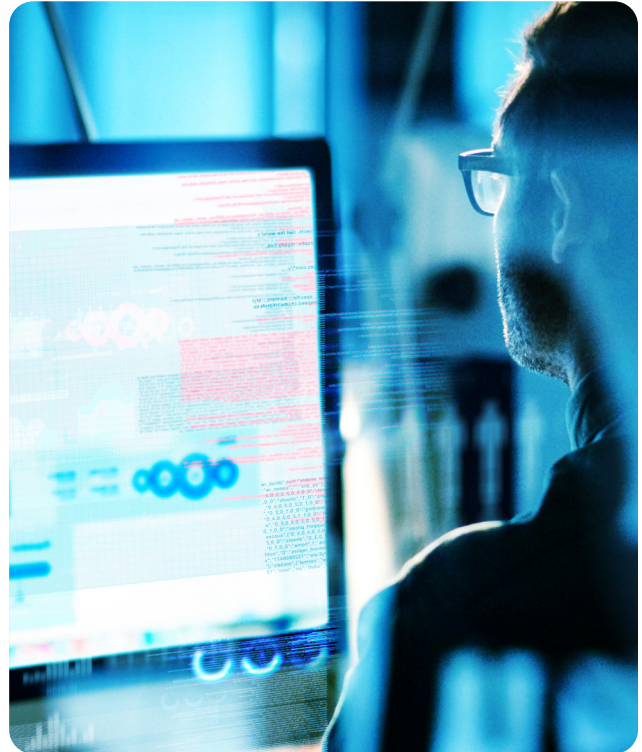
What can you do with Quest Data Modeler?

- **Create data models faster with AI assistance** — Turn natural-language prompts into draft models, refine existing designs, and generate documentation without starting every modeling project from scratch.
- **Bring stakeholders into the modeling process earlier** — Let architects, engineers, analysts, governance teams, and business users review, comment, and collaborate in a shared browser-based workspace.

- **Manage model changes with greater control** — Check models in and out, track version history, compare changes, resolve conflicts, and maintain a governed record of how models evolve.
- **Design across every level of the data architecture** — Build conceptual, logical, and physical models in one workflow, while preserving traceability from business requirements to physical database implementation.
- **Connect modeling work to modern cloud platforms** — Reverse engineer existing schemas, forward engineer new designs, and support implementation across platforms like Microsoft Fabric, Databricks, and Snowflake.
- **Turn models into reusable enterprise assets** — Centralize models so teams can discover, reuse, govern, and standardize data design patterns across projects, platforms, and business domains.

Key Features

- **AI Copilot for modeling** — Natural-language model generation, auto-suggested joins and relationships, AI-assisted refactoring, and automated documentation — with opt-in governance and audit visibility.
- **Browser-native real-time collaboration** — Multi-user editing, comments and discussions on entities, Git-like versioning, and shared semantic definitions. No desktop installs.
- **Mart enterprise repository** — Centralized model storage with check-in / check-out, conflict resolution, version history, model compare and merge, and standards enforcement at scale.
- **Conceptual, logical, and physical modeling** — End-to-end traceability across every modeling layer, with forward and reverse engineering against modern cloud platforms.
- **Modern stack integration** — Native dbt, Git, and REST API connectivity. Designed to be part of the modern data stack, not another silo.
- **erwin® hybrid coexistence** — A unified governance and migration model spanning erwin Data Modeler on your desktop and Quest Data Modeler in the cloud. Move to the cloud at your own pace.
- **Native QTDMF integration** — Quest Data Modeler is a component of the Quest Trusted Data Management Platform, connecting modeling directly to governance, catalog, quality, and automated data product delivery.



About Quest Software

Quest Software creates technology and solutions that build the foundation for enterprise AI. Focused on data management and governance, cybersecurity and platform modernization, Quest helps organizations address their most pressing challenges and make the promise of AI a reality. Around the globe, more than 45,000 companies including over 90% of the Fortune 500 count on Quest Software. For more information, visit www.quest.com or follow Quest Software on [X \(formerly Twitter\)](#) and [LinkedIn](#).

Explore our solutions →